



**EPC Contracting**

“Your Energy Source”

Power Plants & Boilers  
Power Plant Main Components  
Renovations Works of Power Plants







## ISIMEK GFRP (Glass Fiber Reinforced Plastic) PIPING

GFRP Pipe refers to "Glass Fiber Reinforced Plastic" pipe systems and is produced using high-performance composite materials. These pipes are typically made of glass fiber-reinforced thermoset resin and silica sand. This combination makes GFRP pipes durable, lightweight, and long-lasting.

### PRODUCT FEATURES

**Diameter Range:** Available in a range of diameters from DN50 to DN9000.

**Pressure Range:** The standard pressure range is from PN1 to PN32 bar, with custom designs available for pressures up to 40 bar.

**Dimensions:** Typically produced in 6m and 12m lengths, but custom lengths can also be manufactured depending on transportation conditions.

**Material:** FRP pipes are made from glass fiber-reinforced thermoset resin and silica sand, providing high flexibility and durability.

### Applications:

- Clean water and drinking water transmission
- Irrigation systems
- Thermal & Hydroelectric power plants
- Sewer systems
- Industrial applications

### Advantages:

- High reliability & Long lifespan
- Low maintenance requirements
- Flexibility and durability
- High chemical resistance
- As Turkiye's "largest diameter" manufacturer of GFRP pipes, **ISIMEK** ensures the reliable supply of these products.





**2024 - 2025 / Elbistan - Turkiye  
Coal Fueled Thermal Power Plant**

Site fabricated GRP pipeline  
Thermal power plant chimney line  
8100 mm outer diameter & 130 meter lenght





# COOLING TOWERS & SCRUBBER

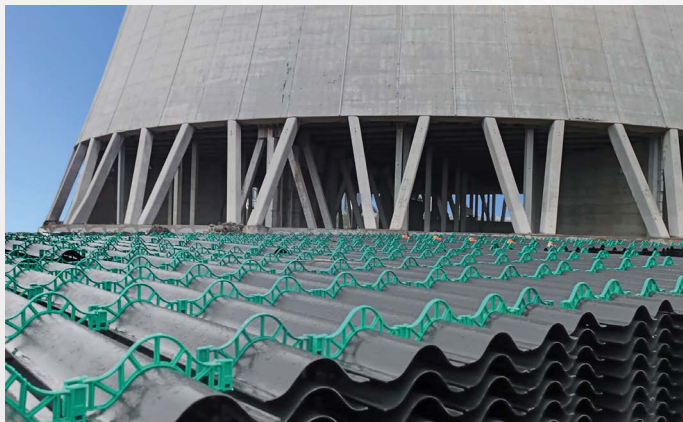


## HIGH-PERFORMANCE FILLING MATERIAL INSTALLATION

High-performance filling installations with exceptional mechanical strength, which is a result of two critical factors: advanced connection technology and a meticulously engineered fill design.

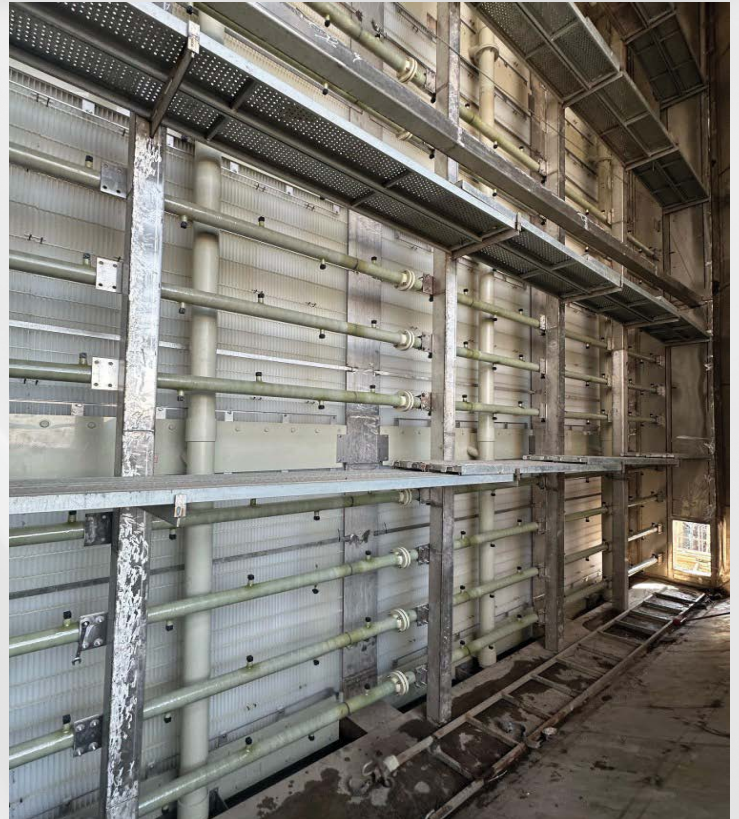
The fill can be manufactured in a range of strength classes, allowing for optimal customization based on specific customer requirements. We prioritize environmental compatibility by utilizing solvent-free materials, ensuring straight forward and reliable processing through our proprietary welding technology, while also adhering to stringent fire protection standards.

Our specially developed welding machines enable the fabrication of fills suitable for long-term use as well as on-site production. Our filling material installations are effective for both slightly and highly contaminated water qualities.



# COOLING TOWERS









### ISIMEK MAKİNA KAZAN İNŞAAT SAN. VE TİC. LTD. ŞTİ.

We have been working to build a more sustainable future in the wide geography covering Europe, Africa, Australia and as well as Türkiye since our establishment as **ISIMEK** in 2002. ISIMEK operates on a total area of 8,000 m<sup>2</sup> including a closed area of 6,000 m<sup>2</sup> and an open area of 2,000 m<sup>2</sup>. **ISIMEK** provides services for world wide energy projects in the fields of engineering, procurement, construction, operation and commissioning.



+90 312 **815 56 07**



export@**isimek.com.tr**



+90 312 **815 56 10**



**www.isimek.com.tr**

Saray Mah. Aksoy Cad. No: 34 K.Kazan 06980 **Ankara / TÜRKİYE**